

# Light Tower

LT70

## Overview

The Light Tower LT70 offers 3 configurable LED lights with pulsing buzzer. The LED's are green, amber and red starting from the base and can be configured to be either solid on, flashing or rotating via internal switch.

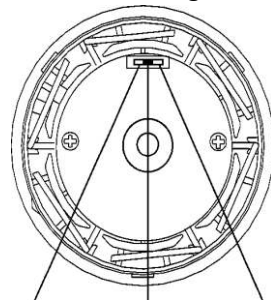
The LT70 comes on an adjustable base which can be rotated  $\pm 90^\circ$  and pre-wired, but can be rewired through internal terminal block to individual requirements.

## Specifications

Specification	Value
Operating Voltage	24 V <sub>DC</sub>
Operating Temperature	-30 °C to 60 °C
Operating Power	2 W/LED (Solid On), 1 W/LED (Flashing/Rotating), 1 W Buzzer
Sound Intensity	70-90 dB @ 1m
IP Rating	IP64
Dimensions	70 x 82 x 360 mm (WxDxL)

## Configuring LED's

There is a 3 position switch in bottom of each LED module that controls its operational mode. The switch selects between either rotating (default), flashing or solid on, as shown in **Figure 1**.

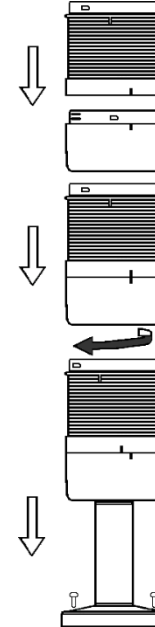


**Figure 1:** LED module configuration switch.

## Assembly

Each module of the LT70 can be changed around to suit custom requirements with the exception of the buzzer must always be at the end of the tower. The base securing bolt in the bottom module must be loosened to remove the base, see **Figure 5**.

There is an alignment indicator at the top of each module and at the bottom of each LED module. To connect any section together, align the indicators, gently push modules together and twist the top module clockwise into the bottom module, as shown in the picture below, **Figure 2**.



**Figure 2:** Assembly of LT70

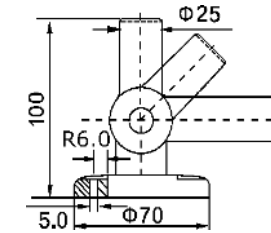
## Mounting

The light tower is mounted by 4x M5 screws/bolts. Refer to diagrams **Figure 4** and **Figure 4** for details.

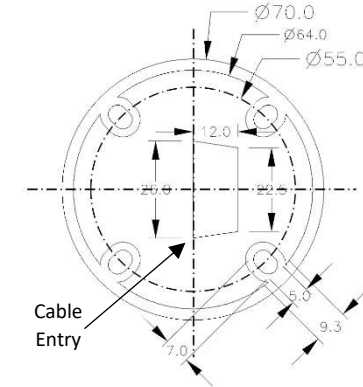
## Wiring

The LT70 comes pre-wired. These wires can be removed and own wires added. The wires terminate in the terminal block as shown in **Figure 5** where the first contact is 0 V and

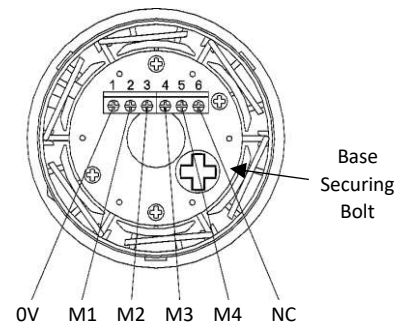
each modules positive contact in the order they are installed. Use with Mute Switch 6182 as per wiring diagram **Figure 6**.



**Figure 3:** Side drawing of base.



**Figure 4:** Drawing of the base from underneath.



**Figure 5:** Terminal inside bottom module.

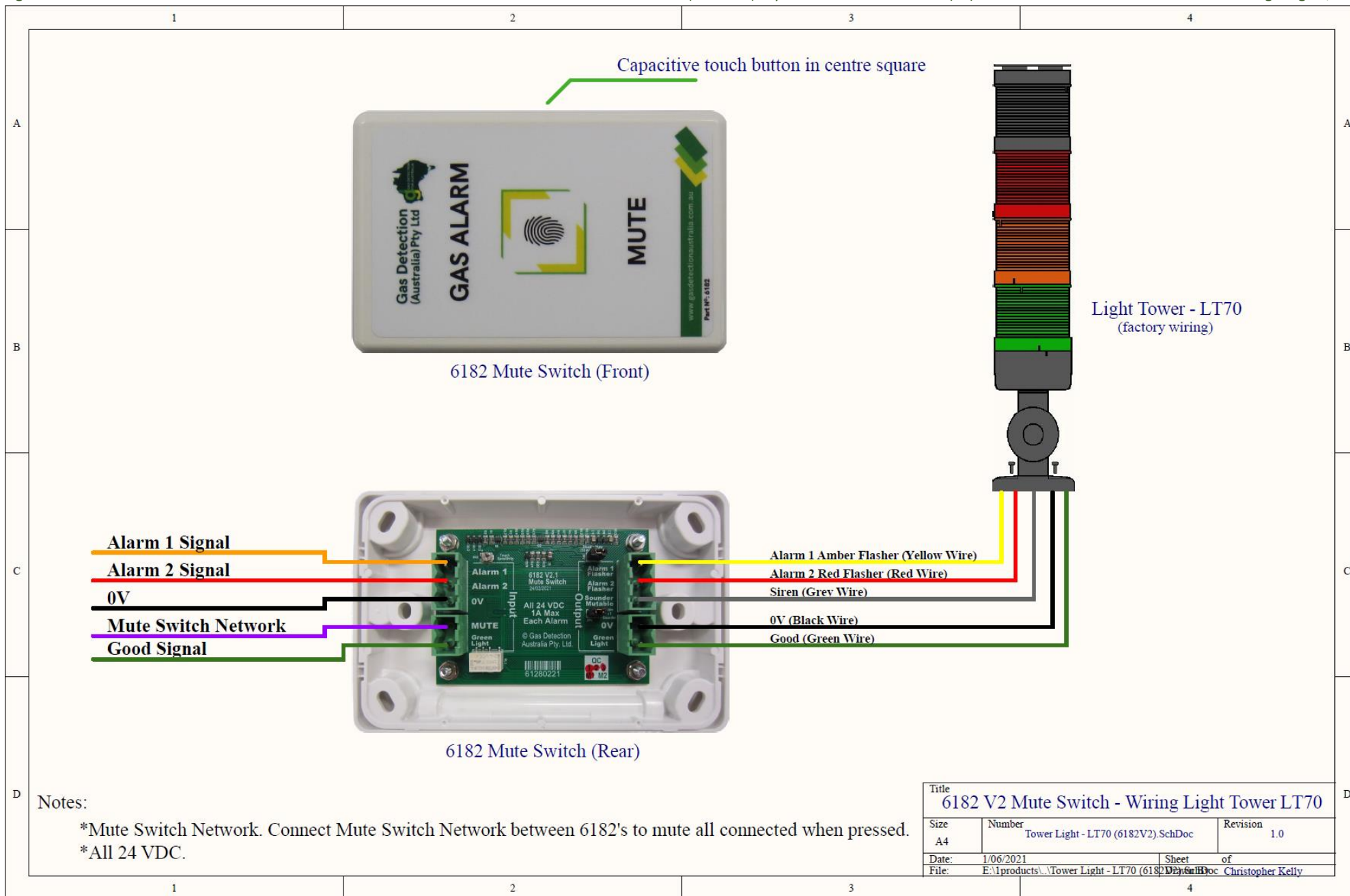


Figure 6: Light Tower LT70 wiring to Mute Switch 6182